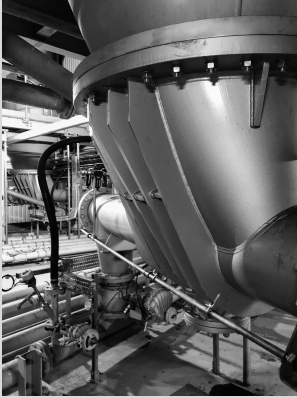




Pneumatic Conveying



HELIX

Pneumatic Bulk Solids Handling
Document No. CPC-INF-2140

The Clyde Pneumatic Conveying HELIX is designed to accurately and reliably inject fuel or other materials, either continuously or on a batch basis into a process.

The system is capable of injecting with accuracies from 0.5 - 2% depending on control system methods.

Materials can be injected into processes at distances of up to 500m with back pressures of up to 30 barg

Address

Clyde Pneumatic Conveying Ltd
Lakeside Boulevard
Lakeside
Doncaster
DN5 4PL
United Kingdom

Phone

+44 01305 552200

Email

sales@clydepc.co.uk

Web

www.clydepc.co.uk



ISO9001 | ISO14001



British Engineering

Key Features

Dome Valve Inflatable Sealing Mechanism

The fast closing bulk material cut-off Dome Valve incorporates a unique pressure tight sealing arrangement

Improved Shaft Sealing

pressure balanced mechanical seals

Quick Change Bearings

modular quick change seal/bearing cartridges

Heavy Duty Auger

slow running manufactured from Hardox

Heavy Duty Gearbox

80,000 hour AGMA rating

ATEX Rated

rated to ExII 3D T125Ct

Pressure Resistant

up to 24 barg pressure shock resistance

Benefits

High Availability

Historical weakness 'engineered out'

Extremely Reliable

Incorporating only tried and tested key components resulting in highly reliable operation in a wide range of applications

High Accuracy

Guaranteed accuracy of 0.5 - 2% when fitted with load cells and connected to a suitable weigh controller resulting in greater efficiency gains

Rapid Response

in the range of 1.5 tph per second up or down

Online Maintenance

Oils and grease replaceable online



Industry Applications

Power Generation

Pulverised Coal, Biomass and SRF to boiler

Cement

Pulversied Coal, SRF and Raw Meal to kiln

Ferrous and Non-Ferrous Metals

Coke, Iron, Limestone to Furnace. Copper concentrate and silica flux to smelter